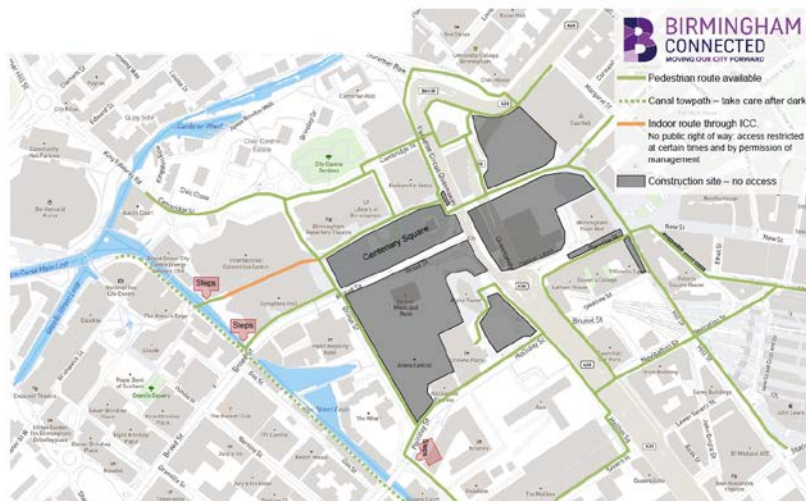


MEET & GREET UNIQUE VENUES BIRMINGHAM

Address of the Venue: Birmingham Repertory Theatre, Centenary Square, Broad Street, Birmingham, B1 2EP

Getting to the venue:



By road:

When you are travelling to The REP from outside Birmingham, follow signs for the City Centre and then the International Convention Centre. If you are using an online route planner or satellite navigation, The REP's postcode is B1 2EP.

Blue Badge Holders:

Parking for Blue Badge holders is available outside Brindley Drive car park (multi-storey at the back of The REP). Parking for Blue Badge holders is also available on Cambridge Street at the rear of the building, but spaces are extremely limited.

Buses:

The REP is situated in central Birmingham and is easily accessible by bus from most areas. Buses that stop on Broad Street directly outside The REP are: (Broad Street) 1, 9, 10, 10H, 22, 23, 24, 29, 29A, 29S, 120, 126, 127, 128, 129, 139, 140, 141, 821 and 829. For further information about buses call the Network West Midlands Journey Planner hotline on 0871 200 22 33.

Trains:

The REP is within walking distance of Birmingham's New Street, Snow Hill and Moor Street stations, which are all within one mile of The REP. Train times are available at the [National Rail website](http://www.nationalrail.co.uk) or traintimes.org.uk

Parking:

Q-Park Brindleyplace car park is conveniently located just a few minutes away and offers safe and secure parking in addition to a range of convenient services including free umbrella hire, shoe shine machine, baby buggy hire, jump starts and more.

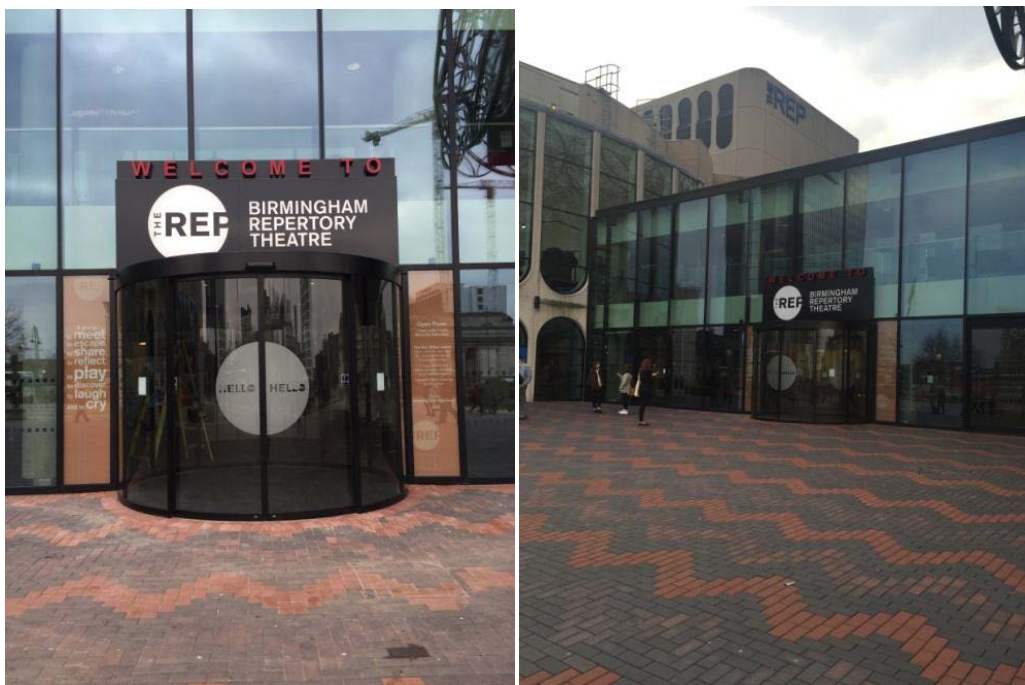
By booking your parking space online at q-park.co.uk you can save up to 40% on the daily parking cost and guarantee your space. REP customers can save an extra 10% by using the promo code **REP2018** when you book. In addition, for each booking, Q Park will donate a further 10% to **REP First, our million pound campaign**. ([link to www.birmingham-rep.co.uk/support-us/rep-first.html](http://www.birmingham-rep.co.uk/support-us/rep-first.html))

Download the Q-Park Rewards app and scan your parking ticket when you arrive at Q-Park Brindleyplace. The loyalty app gives you free access to a range of local restaurant offers which you can use on the day and every six scans gives you a free parking period! **Log on to find out more** <https://www.q-park.co.uk/q-park-rewards>.

Paradise Circus Car Park (Birmingham City Council) on Brindley Drive, B1 2NB. Very competitively priced pay on the day car park, located at the back of the Library of Birmingham and the Rep. Details via https://www.birmingham.gov.uk/directory_record/6680/paradise_circus_multi-storey_car_park

The following car parks are also close by: NIA, Town Hall Multi-Storey, Tennant Street and Holliday Street.

Main Entrance to the Venue - Please come to the front entrance of the building, see picture below.



Reception – Please go to the UVB Meet & Greet Desk in the Foyer.





Manager on duty: Erika, Bhaskar, Vanessa or Agnieszka **Contact Number:** 07852 568392

Access:

We are committed to making the venue as accessible as possible. Please click on the following link to view the list of services we currently offer for customers with access requirements

<https://www.birmingham-rep.co.uk/about-us/access.html>

Fire & Evacuation:

The Alarm is voice activated and delegates/guests will be instructed by the Staff on duty to the nearest exit point and assembly point.

Toilet Facilities:

Situated on the mezzanine & on the ground floor

WIFI:

Depending on your location please log on to REP Guest WIFI or Library of Birmingham WIFI. It will ask for your email and then you will have full complimentary access.

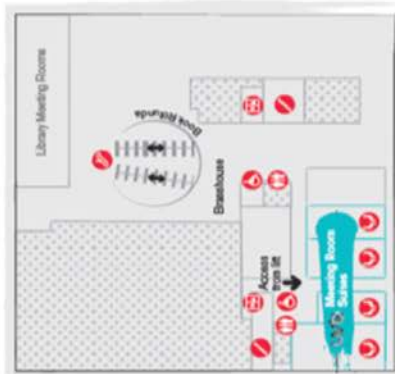
Deliveries:

Please note UVB will not take responsibility for any deliveries that are undelivered, or damaged or any materials that are left at UVB after the event. Any materials for your event can be delivered after 4pm the day before the event. All deliveries must be pre booked 7 days prior to the event with the team on events@uniquevenuesbirmingham.com so we can ensure collection and storage. Please contact the team to arrange this prior to your event. Any deliveries that are not pre booked will not be accepted by the team. Please also ensure that deliveries are collected after the event has finished.

All Deliveries need to be labelled for the Attention of Erika Jarvis, with the date & name of the event.

Floor 1

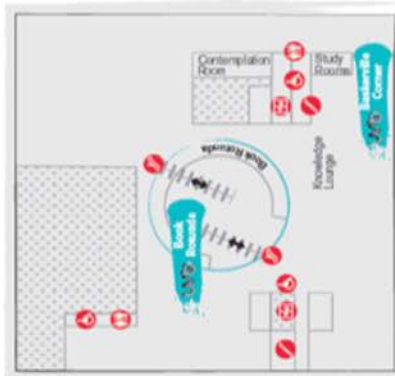
Meeting Room Suite



Century Square

Floor 2

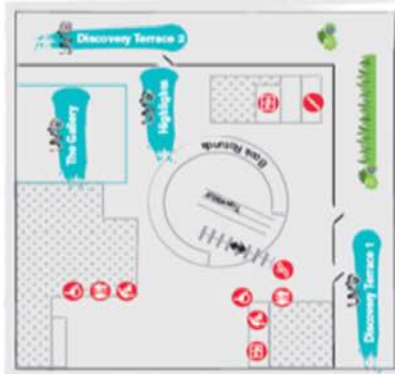
Book Rotunda
Baskerville Corner



Century Square

Floor 3

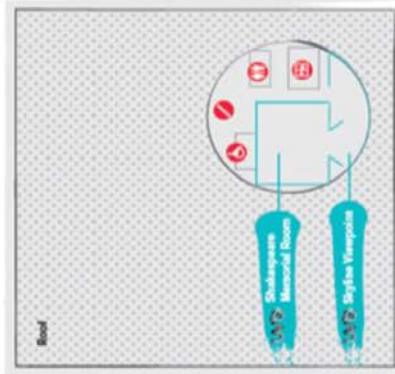
The Gallery
Highlight
Discovery Terrace 1 & 2



Century Square

Floor 9

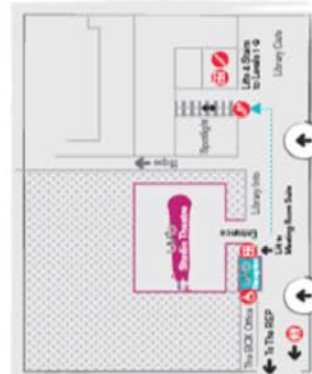
Shakespeare Memorial Room
Skyline Viewpoint



Century Square

Ground Floor

Studio Theatre



LIBRARY ENTRANCE

Century Square



Unique Venues Birmingham

Unique Venues Birmingham provides all of the space and quality you need to complement the moments that matter, but with the added style and uniqueness that make your events memorable.

Make the decision to transform your future events from mundane to magnificent – choose Unique Venues Birmingham.

Visit

uniquevenuesbirmingham.com

Email:

enquiries@uniquevenuesbirmingham.com

Tel: +44 (0) 121 245 2066



Our venues change everything

Directions to UVB Library Spaces

- Meeting Room Suite
- Book Rotunda
- Baskerville Corner
- The Gallery
- Highlight
- Discovery Terrace 1
- Discovery Terrace 2
- Shakespeare Memorial Room



Unique Venues Birmingham

Guest Map



Directions to UVB Theatre Spaces

- The HOUSE
- The Foyer
- The SUITES
- The Mezz
- The SUITES 1, 2 and 3
- The Winterringham Room
- The Burman Room
- The Meeting Rooms

Our venues
change
everything

UVB is run by The REP, a producing theatre that makes its own sets, costumes, wigs and props from within its Centenary Square home. This dynamic and creative environment sets the tone for clients seeking something special for their guests. For an event which requires something truly dramatic – how about one of The REP's theatre auditoria?

... for added drama!

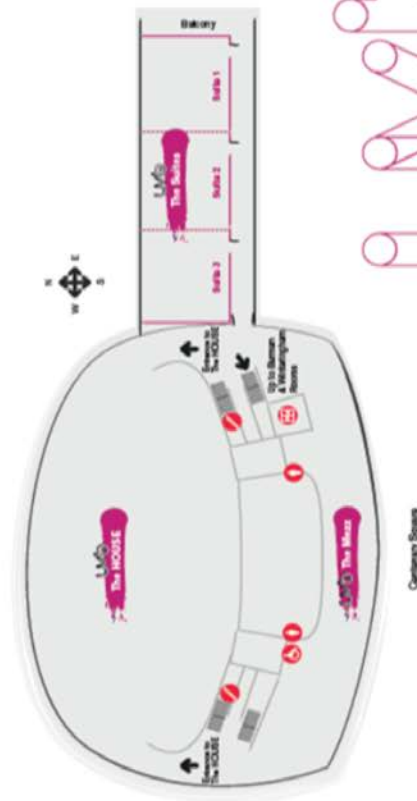
On occasion you could have access to:

- **The HOUSE** (620 seat) the theatre's most epicallly proportioned space
- The adaptable 290 seat **The STUDIO** with state of the art facilities
- The intimate theatre space **The DOOR** (140 seat)



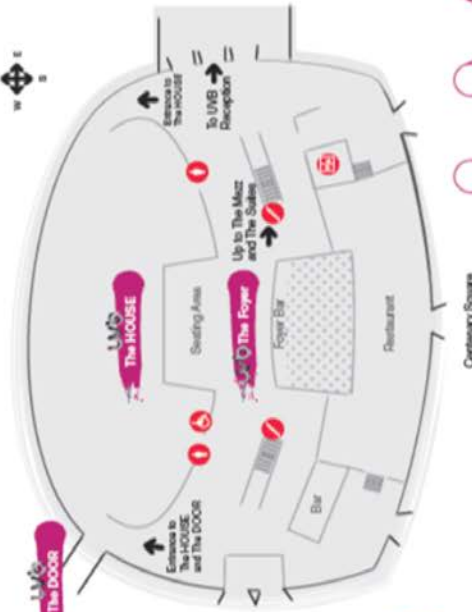
1st Floor

The Mezz
Suites 1, 2 and 3



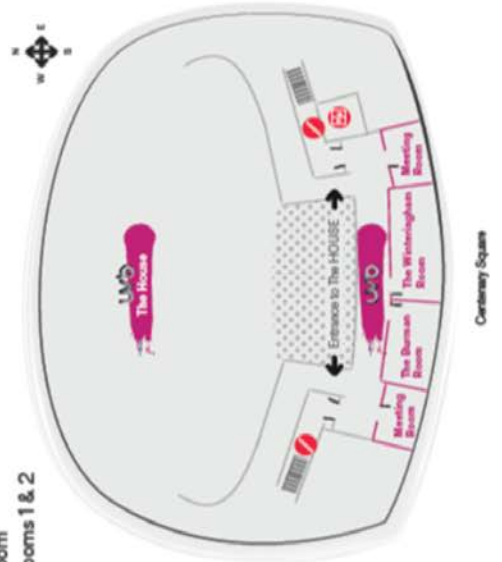
Ground Floor

The HOUSE
The FOYER
The DOOR



2nd Floor

The Winterringham Room
The Burman Room
The Meeting Rooms 1 & 2



Centenary Square